



**Shenjiao Engineering Company (Private) Limited**

**CREATE VALUE FOR CLIENT**



Shenjiao Engineering Company (Private) Limited

CREATE VALUE FOR CLIENT



Shenjiao Engineering Company (Private) Limited

**MR. WU JI JUN**  
**C.E.O**

# C.E.O MESSAGE

As an old Chinese saying goes, "A close neighbor is better than a distant relative." China and Pakistan are good brothers and good neighbors. China has put forward "The Belt and Road Initiative", the "China-Pakistan Economic Corridor" and other national policies conducive to Pakistan's economic development. So I have always been eager to establish a China-Pakistan joint venture in the engineering field here. In March 2017, Shenjiao Engineering Company Private Limited (SECO) was established in Lahore, Pakistan. As a manufacturer of advanced processing technology in China, SECO specializes in the design, fabrication and engineering services of steel structures, steel formwork, trolley carts, hanging baskets, concrete mixing stations, cranes, container houses, etc.

My vision for the company is to inspire innovation and ignite people dreams to develop the steel manufacturing company into an integrated engineering giant in Pakistan.

**"Create value for clients, 100% client satisfaction"**

is the goal we want to achieve. I hope clients not only remember our company, not only based on the best product quality, but also because we have the best clients service.

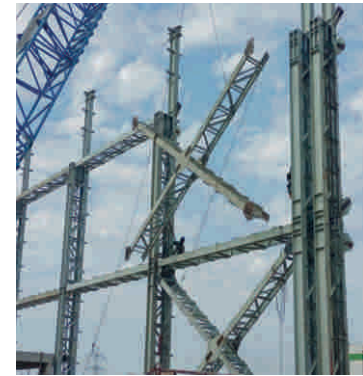
中国有一句古话，“远亲不如近邻”。中国和巴基斯坦是好兄弟和好邻居，中国提出了“一带一路”倡议、“中巴经济走廊”和其他有利于巴基斯坦经济发展的国家政策，所以我一直渴望在这里的工程领域建立一家中巴合资企业。2017年3月，深交工程（私营）有限公司（SECO）成立于巴基斯坦拉合尔。作为拥有中国先进加工技术的制造商，SECO专门从事在钢结构、钢模板、桥梁挂篮、隧道衬砌台车、混凝土搅拌站、起重机、集装箱房屋等方面的设计、制作和工程服务。

我对公司的愿景是激发创新，点燃人们的梦想，将这家钢结构工程公司发展为一个巴基斯坦的综合性的工程巨头。

“为客户创造价值，100%的客户满意度”是我们想要达到的目标。我希望客户能够深刻地记住我们的公司，不但基于最好的产品质量，也因为我们最好的客户服务。

# SOPHISTICATED

- In now a days, which is truly an era of fast paced development, cut throat competition urges every faction of business to be as competitive as possible so that survival is ensured.
- A pronounced edge is deemed essential to keep the clients hooked, lest they find someone else, more attractive, more competitive and more suitable to get their business needs fulfilled comfortably from there.
- If these factors, which make a business more acceptable for customers can be concisely described in one word, surely that word is "Sophistication".
- SECO is well aware of the business pulse & they have acquired the skills with a day & night untiring efforts to meet the needs of their valued clients with as much "Sophistication" as the time & machines coupled with skilled workmanship can help them to achieve.



# ABOUT US

- The name SECO is synonymous to its business. Rich in resources, SECO is capable to take challenges in industrial engineering jobs in line with international standards.
- SECO as a professional outfit takes the business not as a source of generating the revenue but as a passion to excel and keep on progressing untiringly in an efforts to outpace the arch business rivals not only in Pakistan but overseas also.
- Management and staff work hard to make, 'SECO' a real trustworthy brand name.

# WHAT WE DO?

○ **Pre-Engineering Building**

○ **Custom Steel Fabrication**

○ **Fabrication & Erection**

○ **Civil Construction**

○ **Solid Waste Management**

○ **Mechanical Design**

○ **HVAC**

○ **Telecommunication**

○ **Galvanizing**

○ **Transmission Tower**

○ **Water Treatment**

○ **Pipe Line Work**

○ **Road Safety**

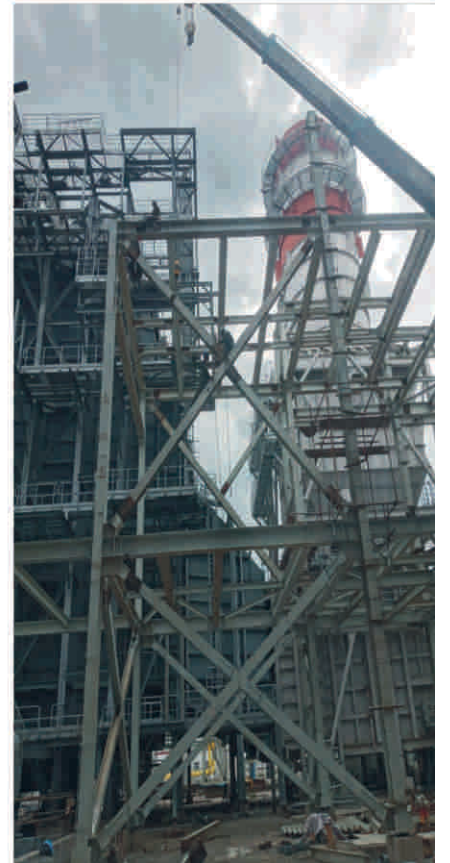
○ **Road Marking**

○ **Security Products**

○ **CNC Products**

○ **Porta Cabin Works**

○ **Container Houses**





# ENVOLVED

- EVOLUTION is the key principle for SECO to move forward.
- The process of evolution is a continuous efforts & SECO is well aware of the need for a continuous growth.
- SECO has evolved itself in the construction industry gradually. Over a period of time in China, SECO, undertook their early age assignments but disposed them off with due care & diligence in an all out effort to come upto the expectations of their respected clients.



**Mr. Harold**  
Factory Director



**Muhammad Imran Mahr**  
Director/ GM



**Li Ning**  
Company Secretary/ CFO



**Jiang Wei**  
Design Engineer



**Abdul Samad**  
HR Manager



**Qasim Babar**  
Engineer



**Mr. John**  
Workshop Incharge



**Usama Khalid**  
Marketing Manager



**Asad Ullah Butt**  
Legal Advisor



**Nadeem Aftab**  
HSE Manager



**Imran Ali**  
Store Incharge



**Abdal Ali**  
Manager Accounts & Taxation



**Muhammad Ahmad**  
AS Marketing Manager



**AHMAD NAWAZ**  
QA/QC Manager

OUR TEAM

# OUR EQUIPMENT



EQUIPMENT

- Welding Plants
- Co2 Arc Welding Machines / MIG Welding
- Multi Head CNC Plate Cutting Machine
- H Beam Assembling Machine
- Gantry Submerged Arc Welding Machine
- H&I Section Straightner Machine
- Radial Arm Drilling Machine
- Shot Blasting Machine
- Plate Shearing Machine
- Plate Bending Machine
- Multi Profile Cutting and Punching Machine
- CNC Drilling Machine
- Power Press Mechanical
- Corrugated Profile Machines
- Lathe Machines
- Threading Machines
- Milling Machines
- Plate Rolling Machine
- Hydraulic Press
- Semi Auto Welding Machine



# COMMITTED

- Commitment with the job & its proclamation as a meritorious acknowledgment by the business circles make a company rather renowned.
- Commitment enhance the credibility, much needed to seek business.
- SECO stands committed for (a) quality, (b) precision, (c) use of the art of art machines & tools to save clients valuable time, (d) to remain within the clients bud getary provisions.
- This is a part of continuous process of Evaluation.



**Client Satisfaction**

**Economy**

**Use of Skilled  
Workmanship**

**SECO**

**Quality at its best**

**On time delivery**

**Use of state of  
the art Machinery**

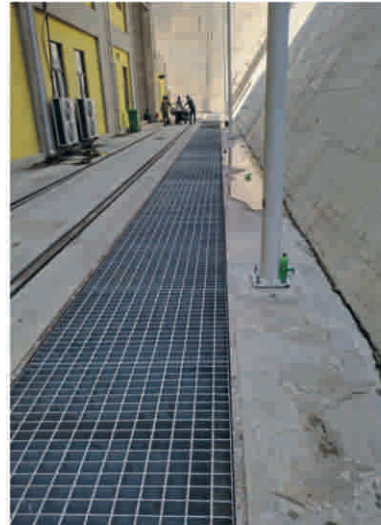


# OUR PRODUCTS

- Roofing Sheets
- All types of Purlins
- All types of Railings
- All types of Gratings
- PEB pre-fab Building
- Gantry Structure

- Bus Bars
- Post Insulators
- Road Barriers
- Road Sign Board
- Road Safety
- Light Poles

- Electric Poles
- Pier Formwork
- Box Pier Formwork
- Box T-Formwork
- Tunnel Lining
- Hydraulic



# OUR PRODUCTS

- Steel Box Girder
- Concrete Dosing Machine
- Asphalt Dosing Machine
- Pedestrian Bridges & Staircase
- Girder Transport Vehicle
- Over Head Cranes
- All Kind Slip Formwork
- Construction Steel Templates
- Batching Plant Accessories
- Steel Hanging Baskets
- All Kind of Steel Structures
- Cement Stock Silos
- Heavy Vehicle Bodies
- Scaffolding Joints
- Chemical Mixing Tanks
- Fuel Storage Tanks
- Office Porta Cabins







# ORGANIZED

- To remain Organized is one of the leading principle of, "Management".
- No office, setup or business case remain alive unless it is duly Organized.
- SECO's management is well aware of this vital took for keeping the company going with a smooth sailing.
- To keep the company, 'Organized' all the latest machinery is continuously inducted to ensure that SECO is fully Organized with men & machinery.

# OUR CLIENTS



**FWO**  
Frontier Work Organization



**CHANGHONG RUBA**  
— Make your imagination fly —



**vivo**



# ORANGE LINE METRO STATION



# PROJECT PROFILE



# MULTAN TO SUKKUR MOTORWAY TOLL PLAZA M-5



# PROJECT PROFILE



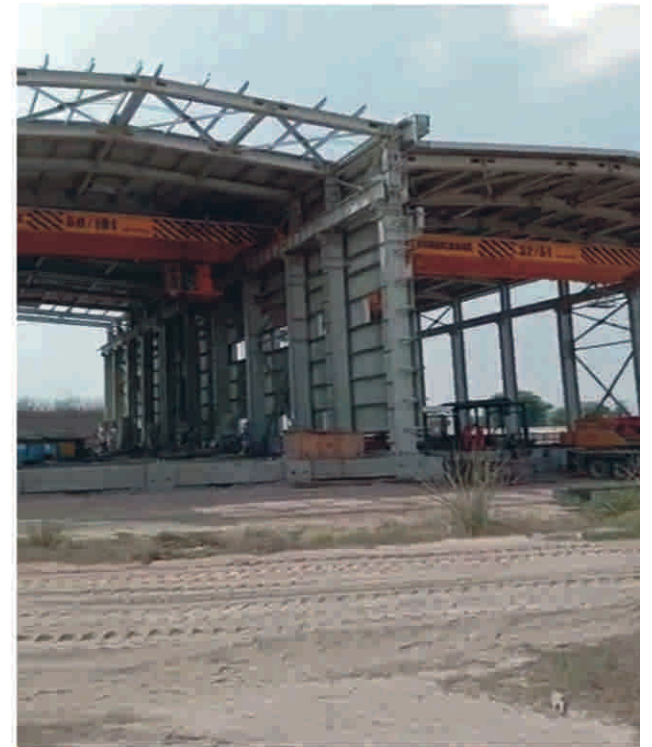
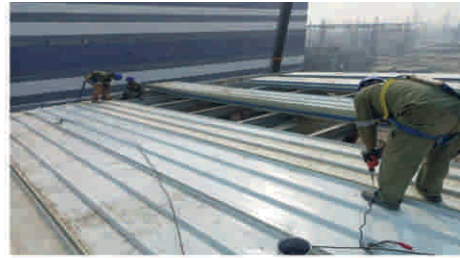


# JHANG POWER PLANT

1263MW



# PROJECT PROFILE



# WIND TURBINE PROJECT

- MASTER GREEN
- DIN
- NASDA
- INDUS
- LAKESIDE



# PROJECT PROFILE



# M-3 & M-4 MOTORWAYS TOLL PLAZA



# PROJECT PROFILE



# TOLL PLAZA

SHEIKHUPURA TO GUJRANWALA



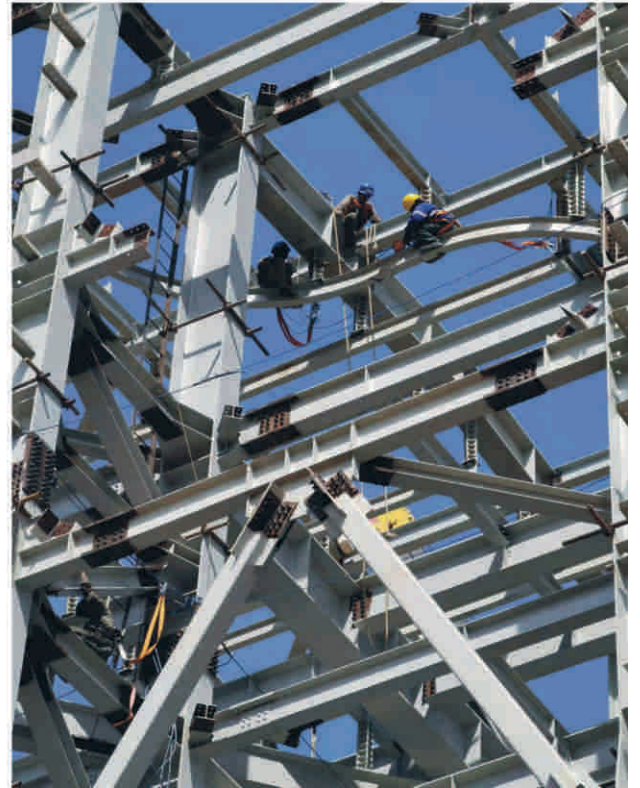
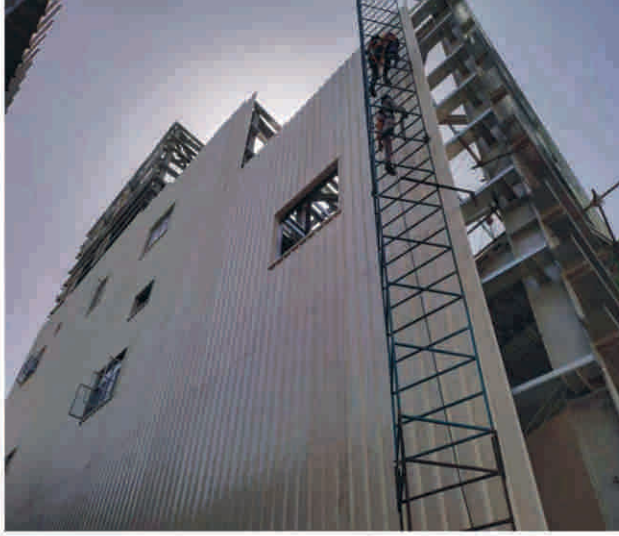
# PROJECT PROFILE

# THAR COAL POWER PLANT



# PROJECT PROFILE





# ENGRO KARACHI



# PROJECT PROFILE



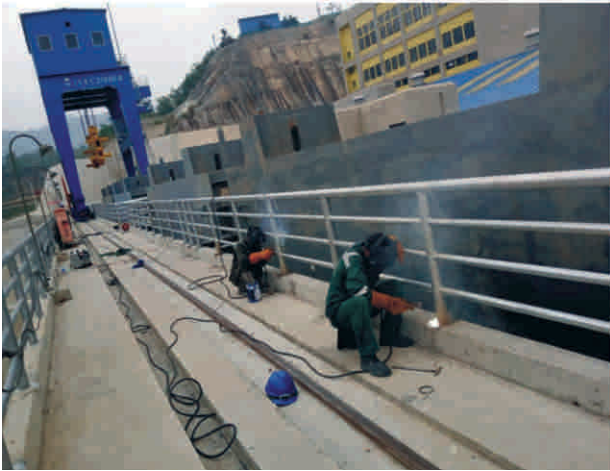
# VIVO FACTORY



# PROJECT PROFILE



# KAROT POWER PLANT (KASHMIR)



# PROJECT PROFILE

# TARBELA DAM PROJECT



# PROJECT PROFILE

# BHASHA DAM PROJECT



# PROJECT PROFILE





# CHANGHONG RUBA (LAHORE)



# PROJECT PROFILE

# TRIMMU BARRAGE PROJECT



# PROJECT PROFILE

# PUNJNAD EXTENSION PROJECT



# PROJECT PROFILE

# PEL 40-MV TRANSFORMER



PROJECT PROFILE

# ROYAL BUFFALO FARM

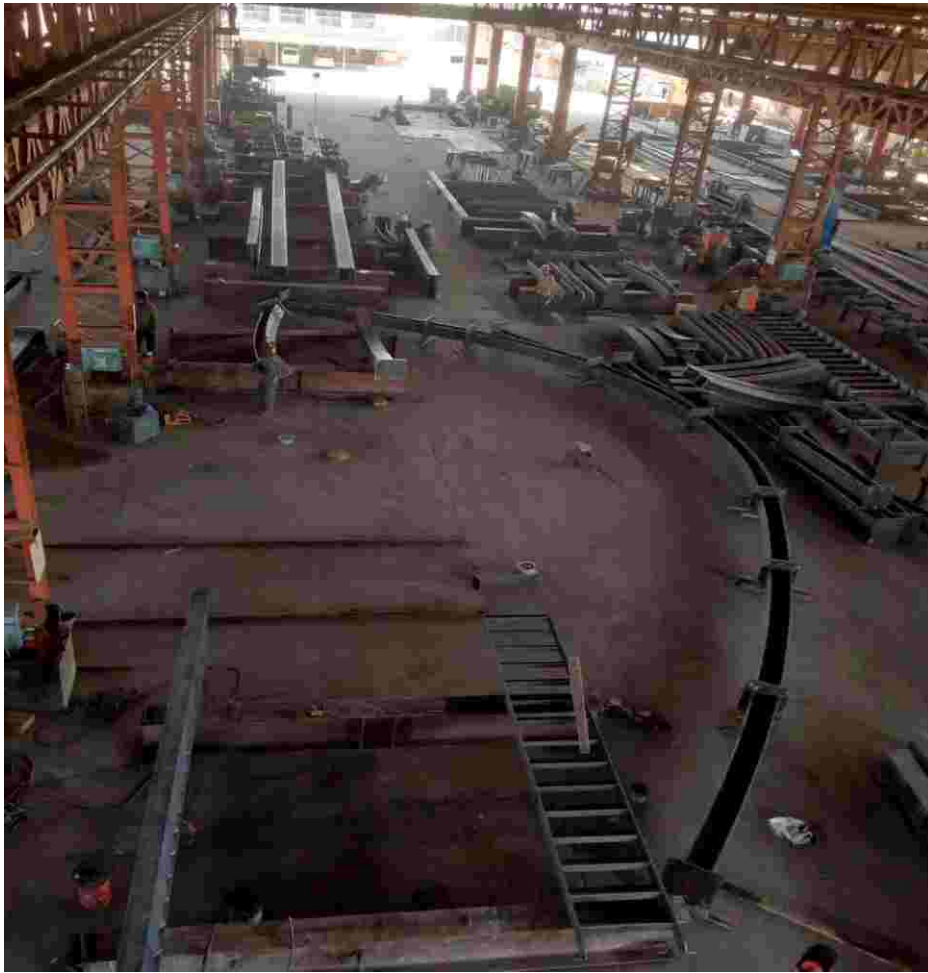
(HAFIZAABAD)



# PROJECT PROFILE

# TARBELA DAM EXTENSION 5<sup>th</sup>

(STRUCTURE PRODUCTION)



# PROJECT PROFILE

# CHASHMA POWER PLANT

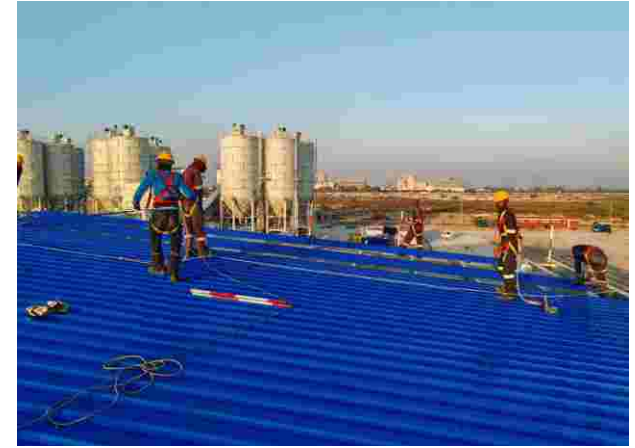
ON GOING PROJECT



# PROJECT PROFILE



# CHASHMA C-5 PROJECT



# PROJECT PROFILE



# (AQMS)

AIR QUALITY MONITORING STATION



# PROJECT PROFILE

# SOLID WASTE MANAGEMENT

COMPANY SUKKUR



# PROJECT PROFILE

# LOCATION





Mehmood Booti  
interchange Ring road,  
opposite Lakhu Der Village, Lahore.

吴继军 WUJUN  
008613880858089(CHINA)  
+92 315 2379 999 (PAKISTAN)



M. Imran Mahr  
+92 333 0531 843

